

FlexSeal

Elastomeric Paint



**100% GERMAN ENGINEERED
ACRYLIC TECHNOLOGY***



The Philippine's 1st Elastomeric Paint

*** IN PARTNERSHIP WITH THE WORLD'S LEADING CHEMICAL COMPANY**

100% Waterproof

FlexSeal

Elastomeric Paint



DESCRIPTION

FlexSeal Elastomeric Paint is a flexible, high build waterproofing coating for interior and exterior surfaces of residential, commercial, industrial and high-rise buildings. It cures to an elastic, seamless homogenous layer which is positively bonded on the substrate to permanently seal cracks and crevices while withstanding everyday building stress. It is based on very elastic polymer, providing excellent flexibility and resistance to harsh environmental elements normally encountered in tropical countries.

FEATURES

- 100% Waterproof
- Extremely Durable
- Easy to Apply
- Flexible
- Tropicalized

Coverage: 18-20 sq.m. per 4 liters.
Depending on surface porosity

Packaging: 4 liters plastic can,
16 liters plastic pail

Shelf Life: 1 year on original unopened container

Storage Condition: Keep dry at 18°C - 35°C

Density: 1.20 - 1.40 kgs. per liter

Solids: 50% ±2

Tack Free Time: 45 minutes (Approx.)

Dry to Touch: 1.5 hours

Dry Through: 4.0 hours

Application: Brush, roller or spray

Note: Additional coatings will result in increased effectiveness and durability.

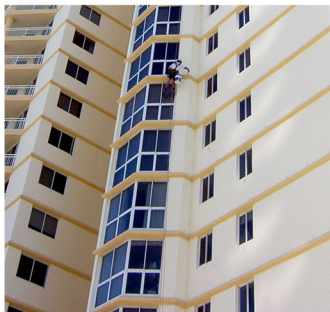
USES:

For new or previously painted exterior/interior concrete surfaces. For properly primed steel or wood surfaces.



SURFACE PREPARATION

The application can be no better than the condition of the surface to which it is applied, surfaces must be cleaned of soot, dirt, form release agents, grease, waxes, laitance, efflorescence, and any other foreign matter. Any chalking, oxidation or any other deterioration of the surface must be removed to a sound substrate. Repair all holes, cracks, mortar joints with elastomeric sealant and/or caulk with an acrylic joint sealant. Use concrete neutralizer to neutralize active lime actions in new masonry surfaces, old masonry should be thoroughly cleaned of all foreign materials. Incidental metal and wood surfaces must be primed and sealed - metal with rust inhibiting primer and wood with a high quality primer sealer. Contact Cambridge for advice on pre-treatment of powdery surfaces. If there is any doubt, a test patch should be applied.



AVAILABLE COLORS:

White, Beige, Red, Terra Cotta, Black, Gray, Cream, Watermelon, Silver Gray, Salmon, Ivory, Tile Red, Copper, Mocha, Pink, Brown, Spanish Red, Midnight Brown, Cocoa Brown, Chocolate Brown, Polar Beige, Cement Gray, Clear, Sunflower, Green, Blue, Powder Blue, Aqua Green, Candid Blue, Fiesta Green, Baguio Green, Desert Beige, Orient Gold, Aquamarine, Jade Green, Mango Green, Avocado, Lime, Aqua Blue, Corn Yellow, Yellow, Violet, Bright Red and Orange. Special colors available upon request.

DISCLAIMER The product information and application details given by the company and its agents has been provided in good faith and meant to serve only as a general guideline during usage. Users are advised to carry out tests and take trials to ensure on the suitability of products meeting their requirement prior to full scale usage of our products. Since the correct identification of the problems, quality of other materials used and the on-site workmanship are factors beyond our control, there are no expressed or implied guarantee/warranty as to the results obtained. The company does not assume any liability or consequential damage for unsatisfactory results, arising from the use of our products.